

## Tissue Culture

### Disposable Plastic Culture Tubes



Suitable for suspension culture procedures

- Available in two sizes: 12x75mm (5ml) and 17 x 100mm (13ml)
- Feature a two position cap, leave loose for gaseous exchange or push down tight to seal
- Available in polypropylene or polystyrene with a round base
- Individually or bulk packed
- All tubes feature a white marker spot for easy labelling and printed graduations
- Tubes are gamma irradiated for ensured sterility

Cat. No	Product Code	Description	Tube size (mm)	Inner Pack	Case qty	Guide Price
<b>Polystyrene tubes</b>						
TC/16002	75CTS1	5ml culture tube	12x75	1x100	500	113.30
TC/16004	75CTS	5ml culture tube	12x75	25	500	80.13
TC/16006	100CTS1	13ml culture tube	17x100	1x100	500	132.21
TC/16008	100CTS	13ml culture tube	17x100	25	500	92.23
<b>Polypropylene tubes</b>						
TC/16010	75CTP1	5ml culture tube	12x75	1x100	500	166.56
TC/16012	75CTP	5ml culture tube	12x75	25	500	80.13
TC/16014	100CTP1	13ml culture tube	17x100	1x100	500	140.12
TC/16016	100CTP	13ml culture tube	17x100	25	500	92.23



TC/160

### PYREX® - Disposable Glass Culture Tubes

**PYREX®**

Manufactured from chemically inert Pyrex® glass. Tubes and caps can withstand autoclaving at 121°C.

Cat. No	Product Code	Dimensions Bottom (mm)	Top	Case Qty.	Guide Price
<b>Glass Culture Tube</b>					
TC/12002	99445-10	10x75	Round Rimless	1000	59.82
TC/12004	99445-12	12x75	Round Rimless	1000	66.98
TC/12006	99445-13	13x100	Round Rimless	1000	81.32
TC/12008	99445-15	15x85	Round Rimless	1000	131.54
TC/12010	99445-16	16x100	Round Rimless	1000	133.94
TC/12012	99445-16X	16x125	Round Rimless	1000	136.33
TC/12016	99445-16XX	16x150	Round Rimless	1000	148.29
TC/12018	99445-18	18x150	Round Rimless	500	83.67
TC/12002	99445-20	20x150	Round Rimless	500	131.54
TC/12020	99449-13	13x100	Round Screw Neck	1000	375.44
TC/12022	99449-16	16x100	Round Screw Neck	1000	437.64
TC/12024	99449016X	16x125	Round Screw Neck	1000	468.75
TC/12026	99449-16XX	16x150	Round Screw Neck	1000	502.24
TC/12028	99449-20	20x125	Round Screw Neck	500	294.14
TC/12030	994498-20X	20x150	Round Screw Neck	500	313.28
TC/12032	99448-16	16x125	Flat Screw Neck	1000	463.97
TC/12034	99448-19	19.5x145	Flat Screw Neck	500	279.83
<b>Screw cap with rubber liner</b>					
TC/12040	99999-13	13		1000	148.29
TC/12042	99999-15	16		1000	162.25
TC/12044	99999-18	20		1000	188.93
<b>Screw cap with PTFE faced liner</b>					
TC/12046	9998-13	13		288	133.94
TC/12048	9998-15	16		288	150.66
TC/12050	9998-18	20		192	186.51



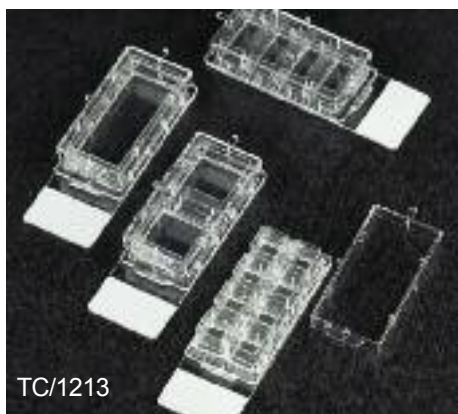
TC/12020



TC/12032



TC/12046



TC/1213

## Specialist Products, IWAKI®

Iwaki chamber slides comprise a plastic polystyrene chamber attached to a glass microscope slide by means of a non-toxic silicone rubber.

- The slides allow culture, fixation, staining and observation of cells all on one side.
- Independent chambers help simultaneous multi-cultures with low risk of crosscontamination. Iwaki glass based dishes are made from a choice of glass or quartz coverslip attached to the base of a 35mm polystyrene dish with non-toxic silicone adhesive.
- The dishes are available with glass components of 27mm and 12mm diameters and are assured sterile by gamma irradiation.
- The glass or quartz area allows fluorescent measuring of live and dead cells, con-focal laser microscope studies and observation of cells at a higher magnification than that achievable through plastic dishes.
- Higher transmittance and measurement of lower fluorescence can be achieved using the quartz based dishes.

Further information on substrate coated dishes and other tissue culture treated and non-treated dishes is available, please ask for the Iwaki leaflets.

### Chamber Slides

Supplied in cases of 20, inner pack 10

Cat. No.	Product Code	No of Chambers	Chamber size (mm)	Slide material	Guide Price
TC/12132	5702-001	1	20.0x45.0	Glass	166.34
TC/12134	5712-002	2	20.0x20.0	Glass	141.68
TC/12136	5722-004	4	10.0x20.0	Glass	126.86
TC/12138	5732-008	8	10.0x10.0	Glass	112.77



TC/1215

### Glass Based Dishes

Supplied individually wrapped in cases of 50

Cat. No.	Code	Base material	Coverslip diameter	Guide Price
TC/12152	3900-035	Quartz	27mm	653.64
TC/12154	3901-035	Quartz	12mm	460.73



TC/160

## Dishes

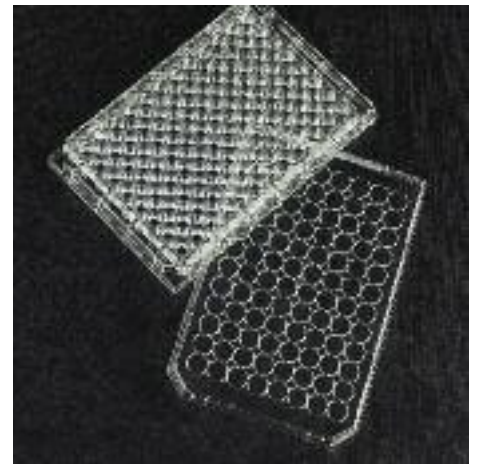
- Iwaki brand cell culture dishes are manufactured from optically clear, premium grade, nontoxic virgin polystyrene under strict clean room conditions and are assured sterile by gamma irradiation. All dishes are certified non-pyrogenic (0.5EU/ml).
- Iwaki dishes feature a special tissue culture (TC) treatment that ensures optimum cell attachment and growth. Non-treated dishes are also available for suspension or plant cell culture.
- Iwaki cell culture dishes are available in a range of sizes from 35mm to 150mm all featuring stacking rings for stability and vents for improved gas exchange.
- An easy grip feature on all 35, 60 and 150mm dishes reduces the risk of accidentally removing the lid when the dishes are picked up.
- Thick, flat bases enhance optical clarity and reduce bowing; dish lids are untreated to minimise condensation.

Cat. No.	Code	Special feature	Dimensions (mm)	Growth area(cm <sup>2</sup> )	Inner Case Pack	Case qty	Guide Price
Tissue culture treated dishes							
TC/16022	3000-035	Easy to grip	35x10	9	10	300	70.43
TC/16024	3010-60	Easy to grip	60x15	21	10	300	79.85
TC/16026	3020-100		100x20	55	10	300	98.73
TC/16028	3030-150	Easy to grip	150x20	148	5	60	107.80
Non treated dishes							
TC/16032	1000-035	Easy to grip	35x10	9	10	300	64.62
TC/16034	1010-60	Easy to grip	60x15	21	10	300	68.97
TC/16036	1020-100		100x20	55	10	300	92.19
TC/16038	1030-150	Easy to grip	150x20	148	5	60	107.80

## ELISA and Assay Plates

- Iwaki ELISA plates are manufactured from high clarity polystyrene.
- Flat bottom or round bottom chimney well designs are available in both high binding and low binding formats.
- Uniform plate thickness for precise optical clarity and low background interference.
- Each well numbered and lettered for fast accurate measurement.
- Raised well rims reduce the risk of cross contamination.
- Low evaporation lid or sealing film available.
- PVC hanging well flat bottom assay plates are a flexible alternative to polystyrene.
- Compatible with all standard microplate washers, dispensers and readers.

Cat. No.	Product code	Description	Well dia. x depth (mm)	Inner pack	Case qty.	Guide Price
TC/16602	3801-096	ELISA plate 96 well, flat, w/o lid	6.4x10.8	10	50	80.72
TC/16604	3802-096	ELISA plate 96 well, round. w/o lid	6.9x10.8	10	50	80.72
TC/16606	1803-096	Lid for 3801, 3802, 3881, 3882	-	1	50	43.54
TC/16608	1804-096	Sealing film	83x134 (wxd)	-	50	26.14
TC/16610	3881-096	Assay plate 96 well	6.4x10.8	10	50	74.05
TC/16612	3882-096	Assay plate 96 well	6.9x10.8	10	50	74.05
TC/16614	3883-096	Assay plate 96 well PVC	6.4x10.8	10	50	85.52



TC/1660

## Filtration

- The Iwaki range of sterile tissue culture grade filters have been designed to meet the exacting standards of today's cell biologists.
- Choice of filter housing and membrane pore size to satisfy all filtration requirements.
- Specially selected Cellulose Acetate membrane which is both detergent free and low binding.
- Acrylic membrane housing available to aid visual inspection.
- Membrane support permits positive or negative filtration.
- Designed with minimum dead-space to reduce sample loss.
- All Iwaki Filters are supplied in individual blister packs, sterile, ready for use.

Cat. No.	Product code	Mem. Dia. (mm)	Pore size (µm)	Housing	Flow rate (ml/min)	Residual volume (ml)	Case qty	Guide Price
TC/13003	2012-003	3	0.22	PP	0.5	0.01	50	50.81
TC/13013	2032-013	13	0.22	PP	12.0	0.07	50	68.61
TC/13025	2052-025	25	0.22	AS	61.2	0.21	50	80.72
TC/13125	2053-025	25	0.45	AS	94.6	0.21	50	80.72
TC/13050	2132-050	50	0.22	PP	170.0	1.00	10	59.54



TC/13



TC/1622



TC/163



## Flasks

- Iwaki flasks are manufactured from clear, premium grade, non-toxic, virgin polystyrene under strict clean room conditions and are assured sterile by gamma irradiation.
- Iwaki flasks feature a special tissue culture surface treatment that ensures optimum cell anchorage and growth. Non-treated flasks for suspension cultures are also available.
- Each flask is pressure tested for leaks and is certified non-pyrogenic (<0.5EU/ml).
- The wide neck designs allow easy pipetting and cell scraping on all flask sizes.
- Accurate graduations are moulded into each flask facilitating precise filling.
- All flasks have anti-tilt skirts, stacking rims and feet for extra stability. The flasks come in small inner pack sizes with resealable packaging to reduce wastage of product.
- To ensure complete traceability all 25, 75 and 150cm<sup>2</sup> flasks have the lot number etched into the base of the product.
- Choice of two-position cap that enables an airtight seal or manual venting or filter-vented caps for cultures requiring constant gas exchange with the cap fully sealed.
- Filter vented caps feature a 0.22mm hydrophobic membrane that eliminates bacterial and fungal contamination. Vented cap flasks are ideally suited for use for CO<sub>2</sub> incubators.

Cat. No	Product code	Surface area (cm <sup>2</sup> )	Neck	Capacity (ml)	Inner pack	Case qty.	Guide Price
<b>Flasks TC Treated, Double Seal Cap</b>							
TC/16102	3100-025	25	Canted	70	10	300	238.84
TC/16104	3102-025	25	Canted	60(slim)	10	300	238.84
TC/16106	3110-075	75	Canted	270	5	100	151.01
TC/16108	3120-150	150	Canted	600	5	40	98.73
TC/16110	3160-225	225	Straight	900	5	25	95.11
<b>Flasks, Non-Treated, Double Seal Cap</b>							
TC/16222	1100-025	25	Canted	70	10	300	249.01
TC/16224	1110-075	75	Canted	270	50	100	158.25
TC/16226	1160-225	225	Straight	900	5	25	102.37
<b>Flasks, TC treated, Filter Vented Cap</b>							
TC/16332	3103-025	25	Canted	70	10	300	296.19
TC/16334	3113-025	25	Canted	60(slim)	10	300	296.19
TC/16336	3123-075	75	Canted	270	5	100	161.18
TC/16338	3133-150	150	Canted	600	5	40	111.07
TC/16340	3143-225	225	Straight	900	5	25	114.69

## Multi-Well Plates, Tissue Culture Treated

- Manufactured from premium grade virgin polystyrene
- Assured sterile by gamma irradiation and certified non-pyrogenic to less than 0.5EU/ml
- Suitable for single cell isolation through cell culture scale up
- Special surface treatment for optimal cell attachment and growth
- Raised well rims and chimney well design greatly reduce the risk of cross contamination
- Non-reversible lids minimising contamination from condensation
- Each well is alphanumerically labelled

Cat No	Code	No. of Wells	Well Base	Lid	Well ID x Depth (mm)	Well Capacity (ml)	Growth Area (cm <sup>2</sup> )	Case Qty	Guide Price
TC/16622	3810-006	6	Flat	Yes	34.6 x 17.5	16	9.4	50	85.65
TC/16624	3815-012	12	Flat	Yes	22.1 x 17.5	6.5	3.8	50	95.84
TC/16626	3820-024	24	Flat	Yes	15.5 x 17.3	3.4	2	50	90.02
TC/16628	3830-048	48	Flat	Yes	11.2 x 17.1	1.76	0.98	50	95.84
TC/16630	3860-096	96	Flat	Yes	6.4 x 10.8	0.35	0.32	50	87.85
TC/16632	3861-096	96	Flat	Yes	6.4 x 10.8	0.35	0.32	50	87.85
TC/16634	3870-096	96	Round	Yes	6.9 x 10.8	0.35	-	50	96.56

## Pipettes, disposable, polystyrene



Sterilin pipettes are available either bulk or individually packaged. The pipettes feature both negative and reverse graduations and have a non-wettable polystyrene surface to prevent readings from being distorted by a meniscus effect. Certified non-pyrogenic to <0.25EU/ml with an accuracy of +/-1% the pipettes are assured sterile by gamma irradiation.

### Pipettes standard – plastic peel and bulk

Cat. No.	Code	Description	Inner Pack	Case Qty.	Guide Price
PS/16110	40101K	1 ml pipette, single wrap (shelf pack 100)	1	1000	116.77
PS/16112	40102K	2 ml pipette, single wrap (shelf pack 100)	1	1000	135.78
PS/16118	40105	5 ml pipette, single wrap (shelf pack 100)	1	200	43.46
PS/16218	47105	5 ml pipette, single wrap with suction adapter (shelf pack 50)	1	200	48.21
PS/16228	47110	10 ml pipette, single wrap with suction adapter (shelf pack 50)	1	500	122.16
PS/16134	40125	25 ml pipette, single wrap with suction adapter (shelf pack 25)	1	200	108.61
PS/16140	47150	50 ml pipette, single wrap with suction adapter (shelf pack 50)	1	50	74.70
PS/16310	40301	1 ml pipette	25	500	114.05
PS/16312	40302	2 ml pipette	25	500	135.78
PS/16318	40305	5 ml pipette	25	200	43.46
PS/16418	47305	5 ml pipette with suction adapter	25	200	47.53
PS/16328	40310	10 ml pipette	25	500	POA
PS/16428	47310	10 ml pipette with suction adapter	25	500	121.52



PS/1611

### Pipettes standard –paper peel

Paper peel packaging printed with product code, lot number and expiry date

Cat. No.	Code	Description	Inner Pack	Case Qty.	Guide Price
PS/16510	40501K	1ml pipette, single wrap	100	1000	127.62
PS/16512	40502K	2ml pipette, single wrap	100	1000	143.92
PS/16518	47505	5ml pipette, single wrap with suction adapter	50	200	50.23
PS/16528	47510	10ml pipette, single wrap with suction adapter	50	500	125.58
PS/16534	47525	25ml pipette, single wrap with suction adapter	25	200	108.61
PS/16540	47550	50ml pipette, single wrap with suction adapter	25	50	74.70



PS/165

### Pipettes – narrow orifice, plastic peel

For use in cell culture - to help generate single cell suspensions

Cat. No.	Code	Description	Inner Pack	Case Qty.	Guide Price
PS/16618	47305N	5 ml pipette, with suction adapter, narrow orifice	25	200	48.88
PS/16628	47310N	10 ml pipette, with suction adapter, narrow orifice	25	500	121.52
PS/16718	47105N	5ml pipette, single wrap with suction adapter, narrow orifice	1	200	51.61
PS/16728	47110N	10ml pipette, single wrap with suction adapter, narrow orifice	1	500	122.19

### Pipettes – shortie, paper peel

For use with laminar flow cabinets – easier to manipulate in confined spaces

Cat. No.	Code	Description	Inner Pack	Case Qty.	POA
PS/16818	42505	5 ml shortie pipette, with suction adapter (shelf pack 50)	1	200	
PS/16828	42510	10 ml shortie pipette, with suction adapter (shelf pack 50)	1	500	



PS/166



TC/46134

## Cell Culture Flasks, Corning

Manufactured from optically clear virgin polystyrene and treated for optimal cell attachment. Printed with lot numbers for ease in traceability. 100% integrity tested. Sterilized by gamma radiation and certified non pyrogenic.

Cat. No.	Code	Growth	Neck Style area cm <sup>2</sup>	Cap Style	Inner Packs	Case Qty.	Guide Price
TC/46402	430168	25	Canted	Plug	20	500	331.35
TC/46404	430372	25	Canted	Phenolic	20	500	331.35
TC/46132	430639	25	Canted	Vent	20	200	165.47
TC/46406	430720	75	Canted	Plug	5	100	137.91
TC/46408	430725	75	Canted	Phenolic	5	100	138.35
TC/46134	430641	75	Canted	Vent	5	100	159.92
TC/46136	3276	75	Straight	Vent	5	100	191.88
TC/46410	430823	150	Canted	Plug	5	50	119.55
TC/46412	430824	150	Canted	Phenolic	5	50	119.55
TC/46414	431079	175	Angled	Plug	5	50	168.24
TC/46416	431085	175	Angled	Phenolic	5	50	168.24
TC/46138	431080	175	Angled	Vent	5	50	189.37
TC/46418	431081	225	Angled	Plug	5	25	117.64
TC/46140	431082	225	Angled	Vent	5	25	133.32



TC/46002

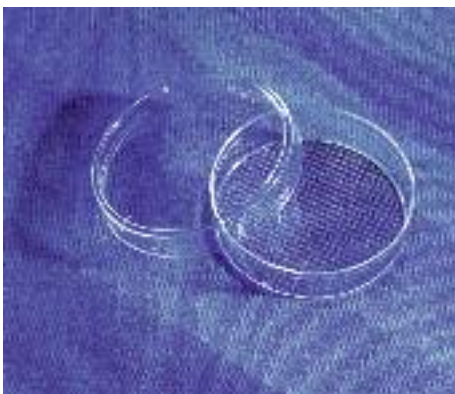
## IVF cell culture dish, Corning

Treated for optimal cell attachment. Sterilized by gamma radiation and certified non pyrogenic.

For research use only.

20mm diameter centre well holds 3ml of medium, whilst outer well holds 10ml of medium.

Cat. No.	Code	Size	Inner Packs	Case Qty	Guide Price
TC/46002	3260	60 x 15mm	20	500	508.60



TC/4603

## Cell culture dishes, Corning

Manufactured from optically clear virgin polystyrene.

Treated for optimal cell attachment. Sterilized by gamma radiation and certified non pyrogenic.

Stacking beads to aid handling. Supplied with vents to provide consistent gas exchange

Cat. No.	Code	Special Features	Diameter mm	Inner Packs	Case Qty.	Guide Price
TC/46022	430165		35 x 10	20	500	142.07
TC/46024	430166		60 x 15	20	500	155.33
TC/46026	430196	2mm Grid	60 x 15	20	500	172.83
TC/46028	430167		100 x 20	20	500	232.60
TC/46030	430293	6 Pack Carrier	100 x 20	10	480	227.06
TC/46032	430599		150 x 25	5	60	114.97
TC/46034	431110	Square	500cm <sup>2</sup>	4	16	119.55